

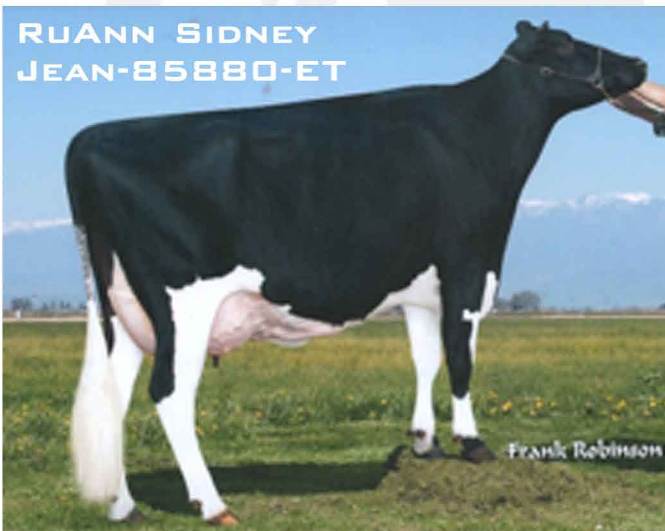
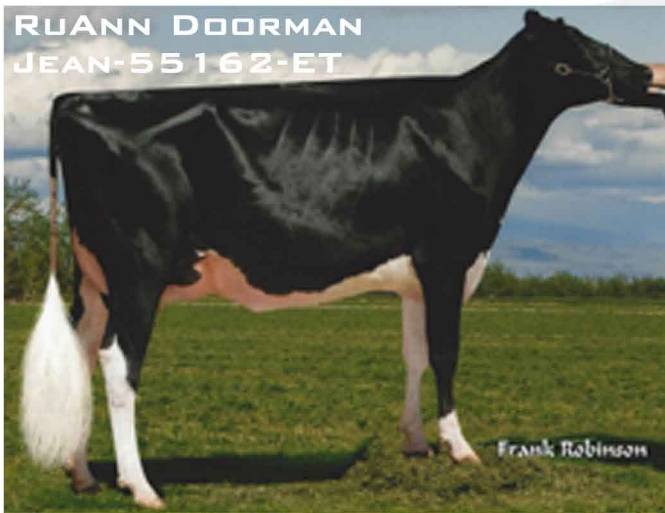


RUANN | GENETICS

JET

100H12077

RUANN JET-74980-ET



Sire: Rayon D'Or Kashmir
Dam: Ruann Doorman Jean-55162-ET

MGS: Val-Bisson Doorman TV TL TY TD
MGD: Ruann Sidney Jean-85880-ET-EX 90
 4-08 3 365 39510 4.1 1617 3.5 1398

MGGS: Stantons Sidney TV EX-93
MGGD: Ruann Jordan Jean-30162

EXTREME TYPE WITH PRODUCTION

AMAZING UDDERS

GREAT FEET & LEGS

12/2020	CDCB SUMMARY GENOMIC		NM\$ -93	
Milk	+436	79%R	Fluid Merit \$	-131
Fat	-2	-0.07%	Cheese Merit \$	-75
Protein	+24	+0.04%	Grazing Merit \$	-147
SCS	3.00	77%R	Gestation Len. +2	Fert. Index -3.0
PL	-2.4	75%R	Livability -6.9	Mastitis +0.4
DPR	-3.7	74%R	EFI 8.0%	gEFI 9.3%
HCR	-0.3			
CCR	-4.1		0 Dtrs 0 Herds	100% US

12/2020	CALVING SUMMARY		SCE 3.1 %	
Sire Calving Ease	3.1%	60%R	0 Obs	
Daughter Calving Ease	3.0%	58%R	0 Obs	
Sire Stillbirth	6.6%	55%R	0 Obs	
Daughter Stillbirth	7.2%	55%R	0 Obs	

12/2020	HA TYPE SUMMARY				TPI +2116				
PTAT +3.52	78%R	UDC+2.36	FLC+0.60	BSC +2.52	0 D / 0 H				
				-2	-1	0	1	2	
Stature	+4.35	Tall							
Strength	+3.01	Strong							
Body Depth	+3.72	Deep							
Dairy Form	+3.01	Open Rib							
Rump Angle	-0.78	High Pins							
Thurl Width	+2.77	Wide							
Rear Legs-Side	+0.10	Sickle							
Rear Legs-Rear	+1.19	Straight							
Foot Angle	+2.19	Steep							
Feet & Legs Score	+1.50	High							
F. Udder Attachment	+3.41	Strong							
Rear Udder Height	+3.22	High							
Rear Udder Width	+3.75	Wide							
Udder Cleft	+2.96	Strong							
Udder Depth	+2.89	Shallow							
Front Teat Placement	+1.72	Close							
Rear Teat P. Rear	+1.91	Close							
Teat Length	+0.36	Long							

**COWS, HEIFERS & BULLS.
 HOLSTEIN EMBRYOS FOR SALE.
 IN VIVO & IN VITRO EMBRYO SERVICES AVAILABLE.**

**GENERATIONS
 -OF-
 EXCELLENCE**