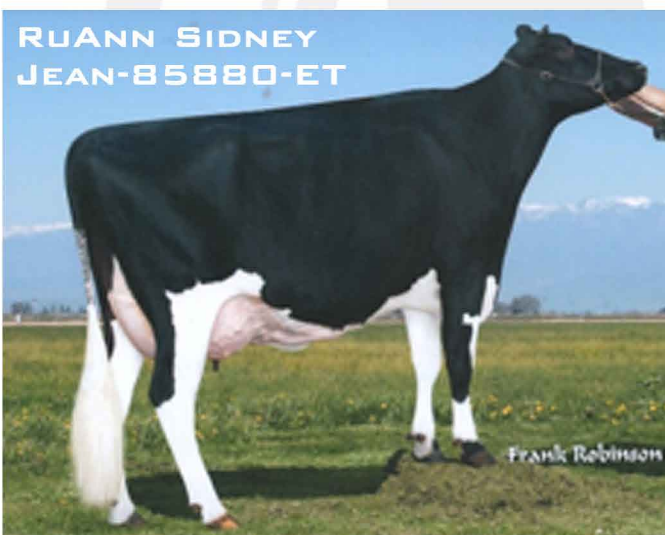
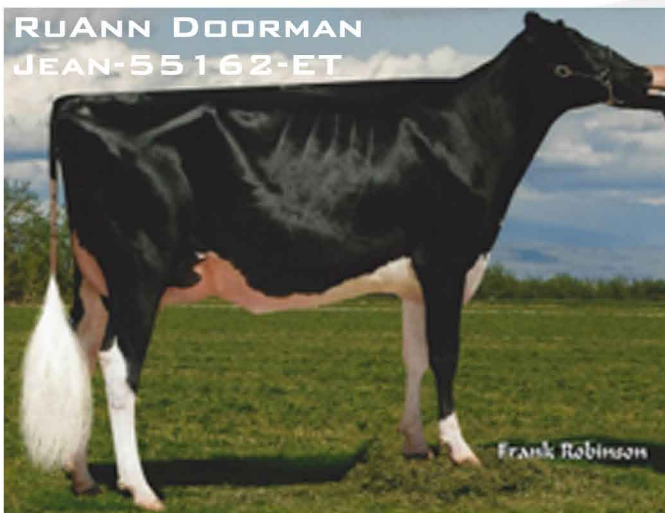




RUANN | GENETICS

JAKE 100H12078

RUANN JAKE-75936-ET



Sire: Rayon D'Or Kashmir
Dam: Ruann Doorman Jean-55162-ET

MGS: Val-Bisson Doorman TV TL TY TD
MGD: Ruann Sidney Jean-85880-ET-EX 90
 4-08 3 365 39510 4.1 1617 3.5 1398

MGGS: Stantons Sidney TV EX-93
MGGD: Ruann Jordan Jean-30162

EXTREME TYPE

AMAZING UDDERS & FEET & LEGS

LOW STOMATIC CELL

12/2020	CDCB SUMMARY GENOMIC		NM\$ -125	
Milk	-53	79%R	Fluid Merit \$	-169
Fat	-10	-0.03%	Cheese Merit \$	-104
Protein	+10	+0.04%	Grazing Merit \$	-144
SCS	2.89	77%R	Gestation Len. +0	Fert. Index -1.6
PL	-2.2	75%R	Livability -5.6	Mastitis +0.7
DPR	-2.1	74%R	EFI 8.0%	gEFI 9.1%
HCR	-0.1			
CCR	-2.8		0 Dtrs 0 Herds	100% US

12/2020	CALVING SUMMARY		SCE 2.6 %	
Sire Calving Ease	2.6%	60%R	0 Obs	
Daughter Calving Ease	2.0%	57%R	0 Obs	
Sire Stillbirth	6.1%	55%R	0 Obs	
Daughter Stillbirth	6.2%	55%R	0 Obs	

12/2020	HA TYPE SUMMARY					TPI +2101		
PTAT +3.58	78%R	UDC+2.05	FLC+1.20	BSC +3.26	0 D / 0 H			
				-2	-1	0	1	2
Stature	+4.63	Tall						
Strength	+3.67	Strong						
Body Depth	+4.09	Deep						
Dairy Form	+2.35	Open Rib						
Rump Angle	+0.49	Sloped						
Thurl Width	+1.94	Wide						
Rear Legs-Side	-1.26	Posty						
Rear Legs-Rear	+2.19	Straight						
Foot Angle	+2.73	Steep						
Feet & Legs Score	+2.05	High						
F. Udder Attachment	+3.23	Strong						
Rear Udder Height	+2.99	High						
Rear Udder Width	+3.45	Wide						
Udder Cleft	+2.71	Strong						
Udder Depth	+2.58	Shallow						
Front Teat Placement	+1.92	Close						
Rear Teat P. Rear	+1.84	Close						
Teat Length	+0.41	Long						

**COWS, HEIFERS & BULLS.
 HOLSTEIN EMBRYOS FOR SALE.
 IN VIVO & IN VITRO EMBRYO SERVICES AVAILABLE.**

**GENERATIONS
 -OF-
 EXCELLENCE**